

This list includes the mammals, reptiles and amphibians found at Girraween National Park. It has been compiled from observations by Queensland Parks and Wildlife Service staff and park visitors.

This list may not be complete, and thus comments, reports and sightings of species not on this list are welcome.

Mammals

The best time to look for mammals is at dawn or dusk. Most wildlife are wary of people and usually keep to the cover of the forest.

Eastern grey kangaroos and various wallaby species frequent grassy areas near the information centre, the picnic area and in the camping areas. Possums can be seen throughout the night, in particular the brush-tailed possum in the picnic and camping areas.

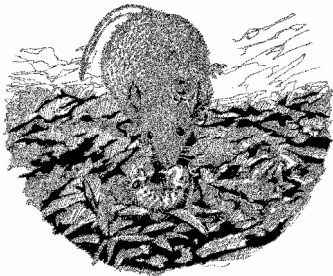
Although 'common' in southern states the common wombat is at the northern limit of its distribution in the forests of Girraween and surrounding districts. Koalas are also rare with isolated individuals only seen occasionally.

Platypus and echidnas

<i>Ornithorhynchus anatinus</i>	platypus
<i>Tachyglossus aculeatus</i>	short beaked echidna

Carnivorous marsupials

<i>Antechinus flavipes flavipes</i>	yellow-footed antechinus
<i>Antechinus stuartii</i>	brown antechinus
<i>Dasyurus maculatus maculatus</i>	spotted-tailed quoll
<i>Smithopsis murina murina</i>	common dunnart



Bandicoots

<i>Isodon macrourus</i>	northern brown bandicoot
<i>Perameles nasuta</i>	long-nosed bandicoot

Wombats and koalas

<i>Phascolarctos cinereus</i>	koala
<i>Vombatus ursinus</i>	common wombat

Possums and gliders

<i>Acrobates pygmaeus</i>	feathertail glider
<i>Pseudocheirus peregrinus</i>	common ringtail possum
<i>Petaurus australis australis</i>	yellow-bellied glider
<i>Petaurus breviceps</i>	sugar glider
<i>Petauroides volans</i>	greater glider
<i>Trichosurus vulpecula</i>	common brushtail possum

Kangaroos, wallaroos and wallabies

<i>Aepyprymnus rufescens</i>	rufous bettong
<i>Macropus giganteus</i>	eastern grey kangaroo
<i>Macropus robustus</i>	common wallaroo
<i>Macropus rufogriseus</i>	red-necked wallaby
<i>Wallabia bicolor</i>	swamp wallaby

Rodents

<i>Hydromys chrysogaster</i>	water rat
<i>Pseudomys gracilicaudatus</i>	eastern chestnut mouse
<i>Rattus fuscipes</i>	bush rat
<i>Rattus lutreolus</i>	swamp rat
<i>Rattus rattus</i>	black rat
<i>Rattus tunneyi</i>	pale field-rat

Bats

<i>Austronomus australis</i>	white-striped free-tail bat
<i>Chalinolobus gouldii</i>	Gould's wattled bat
<i>Chalinolobus morio</i>	chocolate wattled bat
<i>Falsistrellus tasmaniensis</i>	eastern false falsistrelle
<i>Miniopterus orianae oceanensis</i>	eastern bent-wing bat
<i>Miniopterus schreibersii</i>	common bent-wing bat
<i>Nyctophilus geoffroyi</i>	lesser long-eared bat
<i>Nyctophilus gouldi</i>	Gould's long-eared bat
<i>Rhinolopus megaphyllus megaphyllus</i>	eastern horseshoe bat
<i>Saccolaimus flaviventris</i>	yellow-bellied sheath-tail bat
<i>Scotorepens greyii</i>	little broad-nosed bat
<i>Scotorepens orion</i>	south-eastern broad-nosed bat
<i>Vespadelus darlingtoni</i>	large forest bat
<i>Vespadelus regulus</i>	southern forest bat

Frogs

Frogs with aquatic habitats, such as the emerald-spotted treefrog, are commonly found in sedges and grasses growing on creek banks. Sometimes they can be located on the branches of shrubs hanging over water. The stony creek frog and broad-palmed rocketfrogs may be found along creek banks.

Burrowing frogs, such as the ornate burrowing frog, prefer sand soils and may be seen sitting on the walking tracks or in gutters, especially at night after rain.

Small terrestrial frogs or 'toadlets' hide in moist leaf litter, but the most popular habitats of the ground dwelling frogs, are the marshy soaks and still waters of drains and seepage pools.

Treefrogs

<i>Litoria dentata</i>	bleating treefrog
<i>Litoria fallax</i>	eastern sedgefrog
<i>Litoria peronii</i>	emerald spotted treefrog
<i>Litoria rubella</i>	red tree frog
<i>Litoria subglandulosa</i>	New England treefrog
<i>Litoria verreauxii</i>	whistling treefrog

Rocket frogs

<i>Litoria latopalmata</i>	broad palmed rocketfrog
<i>Litoria wilcoxii</i>	eastern stony creek frog

Large ground dwelling frogs (up to 45 to 80mm length)

<i>Limnodynastes dumerilii</i>	grey-bellied pobblebonk
<i>Limnodynastes fletcheri</i>	barking frog
<i>Limnodynastes peronii</i>	striped marshfrog
<i>Limnodynastes tasmaniensis</i>	spotted grassfrog

Burrowing frogs

<i>Platyplectrum ornatum</i>	ornate burrowing frog
<i>Neobatrachus sudelli</i>	meeowing frog

Small terrestrial frogs or 'toadlets' (up to 30mm length)

<i>Crinia parinsignifera</i>	beeping froglet
<i>Crinia signifera</i>	clicking froglet
<i>Pseudophryne major</i>	green brown broodfrog
<i>Pseudophryne coriacea</i>	red-backed broodfrog
<i>Uperoleia laevigata</i>	eastern gungan

Reptiles

Girraween's granite landscape provides an ideal habitat for many reptiles. The thick-tailed gecko *Underwoodisaurus sphyrurus* is restricted to the New England uplands and so too is the leaf-tailed gecko *Saltuarius wyberba* which is only found in the Girraween area. Both geckos come out at night to hunt insects in the leaf litter and debris. During the day look for lizards, skinks and snakes sunning themselves on rocks or darting into the numerous cracks and crevices.

Freshwater turtles

Chelodina longicollis eastern snake-necked turtle
Emydura macquarii macquarii Murray turtle
Wollumbinia belli Bell's turtle

Geckos

Gehyra dubia a gecko
Heteronotia binoei Bynoe's gecko
Underwoodisaurus sphyrurus border thick-tailed gecko
Oedura lesuerii Lesueur's velvet gecko
Oedura tryoni southern spotted velvet gecko
Saltuarius wyberba granite leaf-tailed gecko

Snake lizards (legless or flapfooted)

Lialis burtonis Burton's legless lizard

Monitors (goannas)

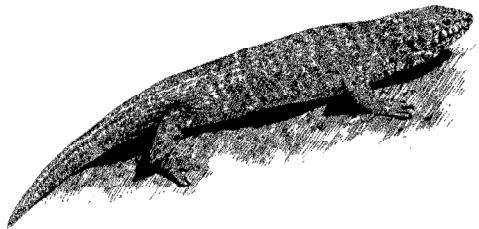
Varanus gouldii sand monitor
Varanus varius lace monitor

Dragons

Amphibolurus muricatus jacky lizard
Amphibolurus nobbi nobbi
Physignathus lesueurii eastern water dragon
Pogona barbata bearded dragon

Skinks

Acritoscincus platynotum red-throated skink
Anomalopus verreauxii a skink
Calyptotis scutirostrum a skink
Carlia tetradactyla a skink
Cryptoblepharus pulcher pulcher elegant snake-eyed skink
Ctenotus eurydice a skink
Ctenotus robustus a skink
Ctenotus taeniolatus copper-tailed skink



Egernia cunninghami Cunningham's skink
Egernia modesta a skink
Egernia mcphreei a skink
Egernia striolata tree skink
Eulamprus martini a skink
Eulamprus quoyii eastern water-skink

Eulamprus tenuis

Lampropholis delicata
Lampropholis guichenoti
Lerista timidus
Liopholis whitii
Lygisaurus foliorum
Morethia boulengeri
Saiphos equilis
Tiliqua scincoides

Blind snakes

Ramphotyphlops nigrescens a blind snake
Ramphotyphlops proximus a blind snake

Pythons

Morelia spilota mcdoweli carpet python

Colubrid snakes

Boiga irregularis brown tree snake
Dendrelaphis punctulatus common tree snake

Elapid snakes (venomous)

Cacophis squamulosus golden crowned snake
Demansia psammophis yellow-faced whip snake
Furina diadema red-naped snake
Hemiaspis signata black-bellied swamp snake
Hoplocephalus stephensi Stephen's banded snake
Pseudechis porphyriacus red-bellied black snake
Pseudonaja textilis eastern brown snake
Rhinoplocephalus nigrescens eastern small-eyed snake
Vermicella annulata bandy-bandy

Freshwater fish

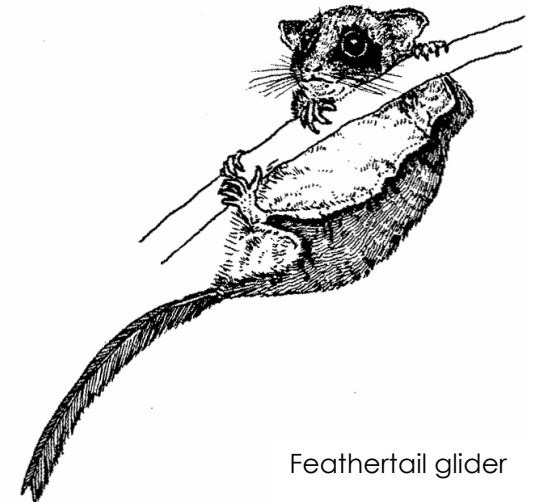
Carassius auratus goldfish
Gadopsis marmoratus river blackfish
Galaxias olidus mountain galaxias
Gambusia holbrooki mosquitofish
Maccullochella peeli peeli Murray cod
Tandanus tandanus freshwater catfish

a skink
a skink
a skink
a skink
White's skink
a skink
a skink
a skink
eastern blue-tongued lizard

Species list

Wildlife

Girraween National Park



Feathertail glider

Visit us online at www.derm.qld.gov.au.
State of Queensland.
Queensland Parks and Wildlife Service. July 2010.
Recycled paper saves energy and resources.